



PH: +61 7 3314 1518 AUS
 +64 3 547 3003 NZ
 info@gallivantingoz.com.au

We're all about campervan adventures!

Travel Highlights

Tasmania



Distance all corners, approx. 2000 km

Best Time to Travel November to April

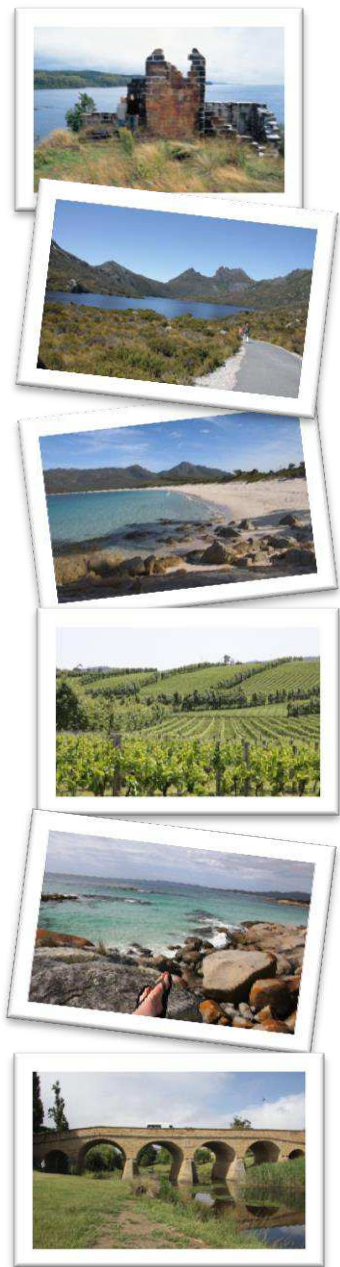
Suggest Time Frame for Travel 14 days minimum

Highlights

- After visiting **Hobart City**, take a drive up scenic **Mount Wellington**. Rising 1270 metres, experience amazing changes in scenery from temperate rainforest at the bottom to glacial rock formations at the top.
- Drive along the **Channel Highway** which hugs the coast and provides stunning views of **Bruny Island**.
- Visit the **Tahune Air Walk**, west of **Geeveston** - spend some time in the forest and enjoy the tree top walk.
- Enjoy exploring the **Huon Valley**, before you make your way up the **Lyell Highway** to your next major destination **Strahan**.
 - Enroute, enjoy the **Salmon Ponds** near **Plenty** and **Russell Falls**. The Falls are a worthy detour to stretch the legs. You can camp at the Falls, or you'll find freedom camps further up the Lyell Highway if you prefer.
 - **'The Wall in the Wilderness'** is a worthy stop
 - Head into **Lake St Clair** – a perfect location for a picnic lunch on the lake edge. There's also a good information/interpretive centre worth having a look at.
 - Travel across the **highlands** towards **Queenstown** - stop to enjoy walks to rivers/falls and stunning viewpoints. You'll find a few freedom camps as you make your way into Queenstown on the banks of the river – perhaps you might even try your hand at trout fishing?
 - **Queenstown** is a mining town with quite a dramatic entry as you wind your way down from the highlands.



- **Strahan** is a lovely place to explore and where you can head out on a popular boat cruise to explore the stunning ancient rainforest in **Gordon Valley** and **Sarah Island**. Sarah Island is where you can see the ruins of an old convict settlement.
- Although a small detour, head to **Cradle Mountain**. Take the free shuttle to Dove Lake to enjoy many short and longer walks in the area
- Heading further north west, you could visit **Stanley**, where you can enjoy the **Nut Chairlift** which offers excellent views over Stanley and the surrounding area. Travelling east towards **Launceston**, you can get 'lost' for days exploring the waterfalls, canyons, caves and numerous wineries and cheese farms. The **Tamar River**, which forms a valley up to **Launceston** from the coast, is full of wineries and fresh produce. Near Launceston, **Cataract Gorge** is a popular area for walking and swimming.
- Along the north coast in locations such as **Low Head**, it is possible to see the Little Penguins coming ashore in the evening.
- Making your way to the East Coast, enjoy the beautiful **Bay of Fires**. If you have a love of oysters, you'll definitely want to make it to **St Helens** where they have the near perfect Georges Bay oysters available.
- **Freycinet National Park** is another of those simply beautiful areas. **Wineglass Bay** is a great walk if you have time and the weather is kind to you. There's also a variety of short walks with stunning views.
- On your way to **Port Arthur**, you will see plenty of natural attraction. You can see blowholes, lookouts and beautiful beaches. You could also pop into the **Tasmania Devil Conservation Park** at **Taranna**.
 - Spend some time in **Port Arthur**, on the southern coast. Previously a convict settlement, it is where you can visit an old prison which gives a wonderful insight into what life was like in those days.
- Before heading back to Hobart, pop into **Richmond** which has several 19th century Georgian buildings. It is also home to Australia's oldest bridge which was built by convict labour in the 1820's.



What Else?

- See plenty of wildlife when travelling in this area like Kangaroos, Wallabies, Wombats, Echidnas, Platypus or the elusive Tasmania Devil
- Get a National Park Pass to save money if you are interested in visiting Tasmania's natural attractions
- The typical landscape is made up of lakes, mountains and beaches interspersed with charming little villages
- Enjoy a thousand star accommodation – you'll see a number of commercial camps, low cost camps and free rest areas that allow overnight camping
- Best travelled over the summer months as can be cold in winter (November to April)
- Minimum time frame of 14 days; many of our retired clients take 28 days or longer if you wish to do a lap of the island

